

The Progress Power (Gas Fired Power Station) Order

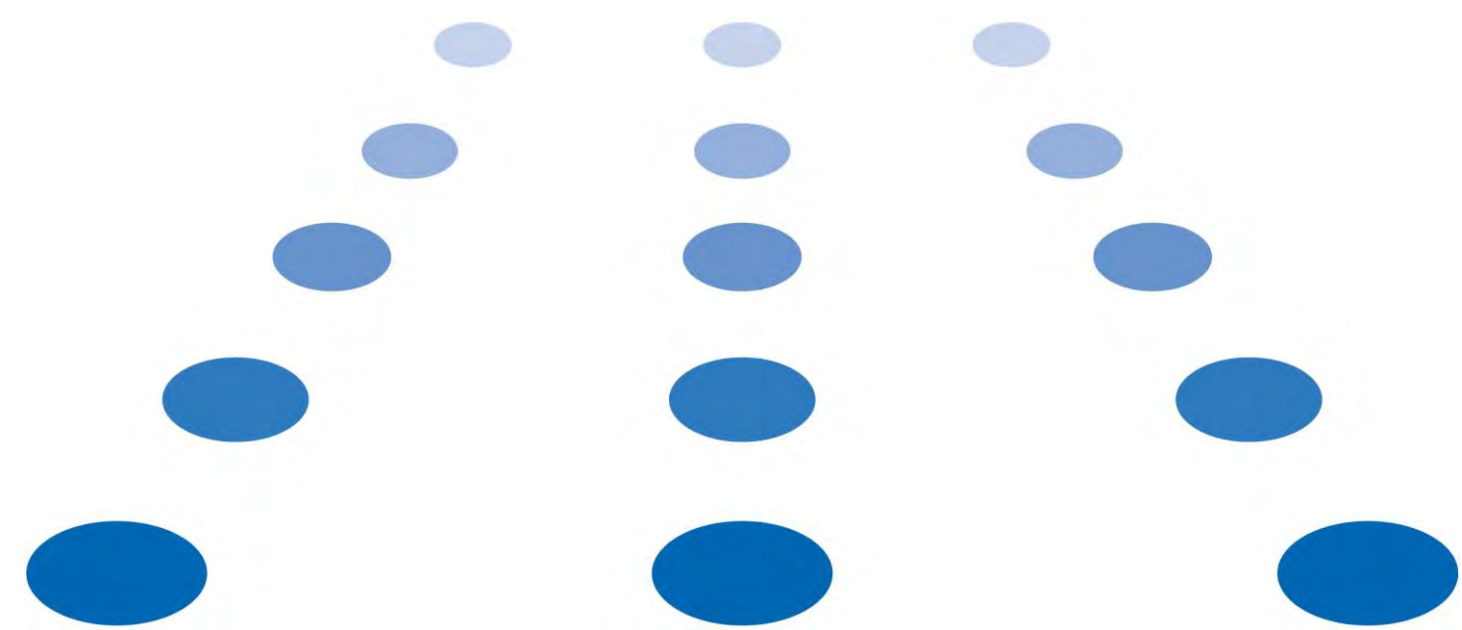
2.9 Outline Landscaping Plans – GIS Variant

Planning Act 2008

The Infrastructure Planning (Applications: Prescribed Forms and Procedure) Regulations 2009

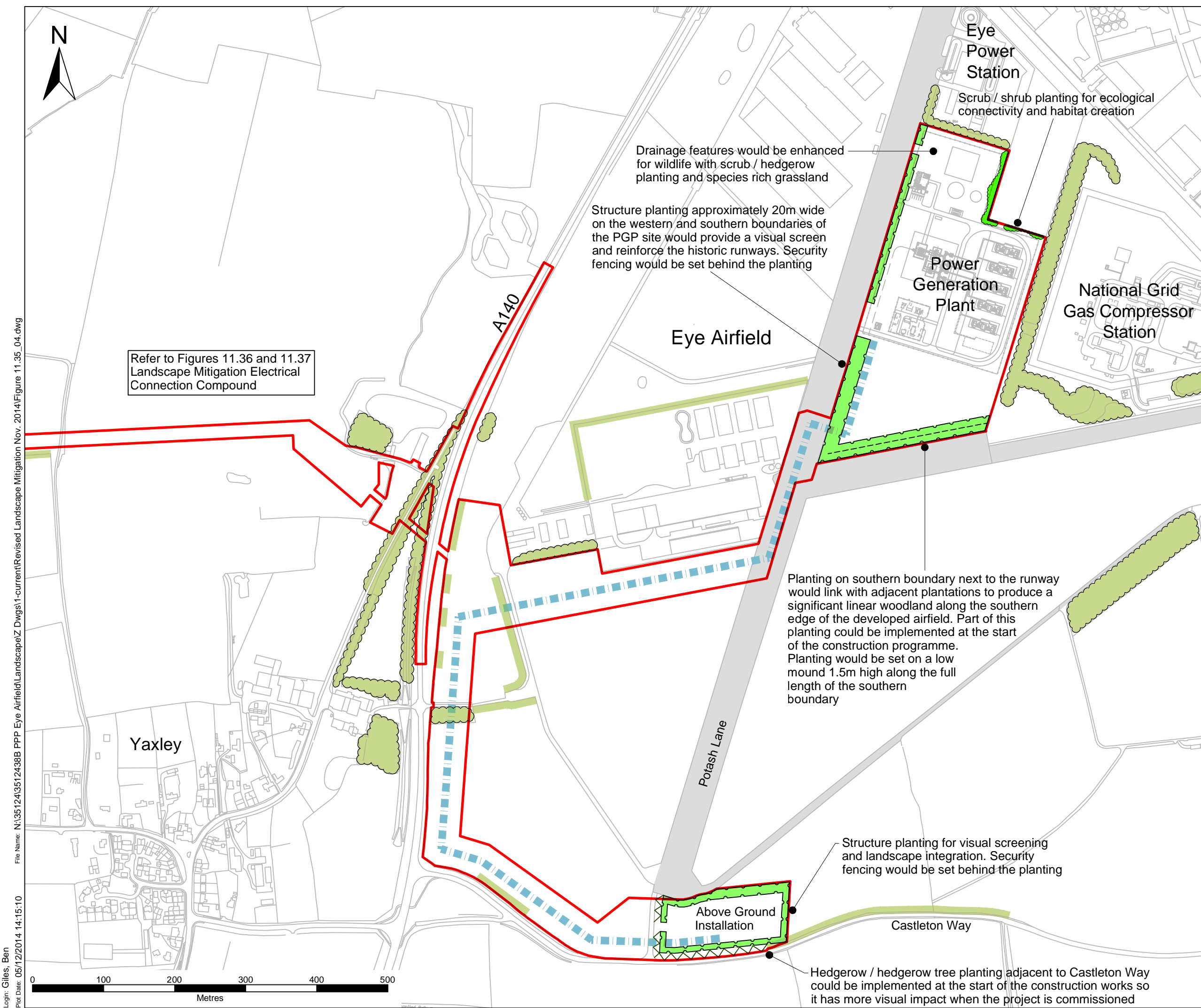
PINS Reference Number: EN010060
Document Reference: 2.9
Regulation Number: 5(2)(o)
Author: Parsons Brinckerhoff

Revision	Date	Description
0	December 2014	Examination Version



Contents

Figure 1 (11.35)	Landscape Mitigation Power Generation Plant and Gas Connection Reg5(2)(o)
Figure 2 (11.37)	Landscape Mitigation Electrical Connection Compound GIS Technology Reg5(2)(o)



Refer to Figures 11.36 and 11.37
Landscape Mitigation Electrical
Connection Compound

Drainage features would be enhanced
for wildlife with scrub / hedgerow
planting and species rich grassland

Structure planting approximately 20m wide
on the western and southern boundaries of
the PGP site would provide a visual screen
and reinforce the historic runways. Security
fencing would be set behind the planting

Planting on southern boundary next to the runway
would link with adjacent plantations to produce a
significant linear woodland along the southern
edge of the developed airfield. Part of this
planting could be implemented at the start
of the construction programme.
Planting would be set on a low
mound 1.5m high along the full
length of the southern
boundary

Structure planting for visual screening
and landscape integration. Security
fencing would be set behind the planting

Hedgerow / hedgerow tree planting adjacent to Castleton Way
could be implemented at the start of the construction works so
it has more visual impact when the project is commissioned

Key

Project red line boundary

Existing

- Woodland/plantation
- Hedgerow
- Former runway/taxiway

Proposed

- Structure/Screen Woodland
- Scrub/shrubs
- Hedgerow / shrubs
- Landscape mound
- Gas pipeline

Notes

- This drawing is to be read in conjunction with the Interim Landscape Mitigation Strategy (as amended).
- The proposed planting and mounding layout is indicative only and is the minimum that would be provided for landscape mitigation. The detailed proposals will be developed in conjunction with the detailed engineering proposals and in discussion with National Grid, in order to fulfil draft DCO Requirements 4 and 5.
- Do not scale off this plan. The proposed layout comprises small features which cannot be measured accurately on the 1: 5,000 Ordnance Survey map data when printed at A3 size.

Rev	Date	Description	By	Chk	App
04	05.12.14	Red line boundary revised.	BRG	KL	KL
03	10.11.14	Notes added. Drainage feature location amended. Width of planting strip on south & west boundaries shown at 20m	BRG	KL	KL
02	03.11.14	Landscape mounding up to 1.5m high added to southern boundary of the Power Generation Plant.	BRG	KL	KL
01	19.03.14	First issue.	BRG	KL	KL

© Crown Copyright and database right 2013.
Ordnance Survey 0100031673

**PARSONS
BRINCKERHOFF**

Queen Victoria House
Redland Hill, Redland
Bristol BS6 6US

Tel: 44-(0)117-933-9300
Fax: 44-(0)117-933-9253

**PROGRESS
POWER**

Site/Project:
Progress Power Project

Title:
**Landscape Mitigation
Power Generation Plant
and Gas Connection**

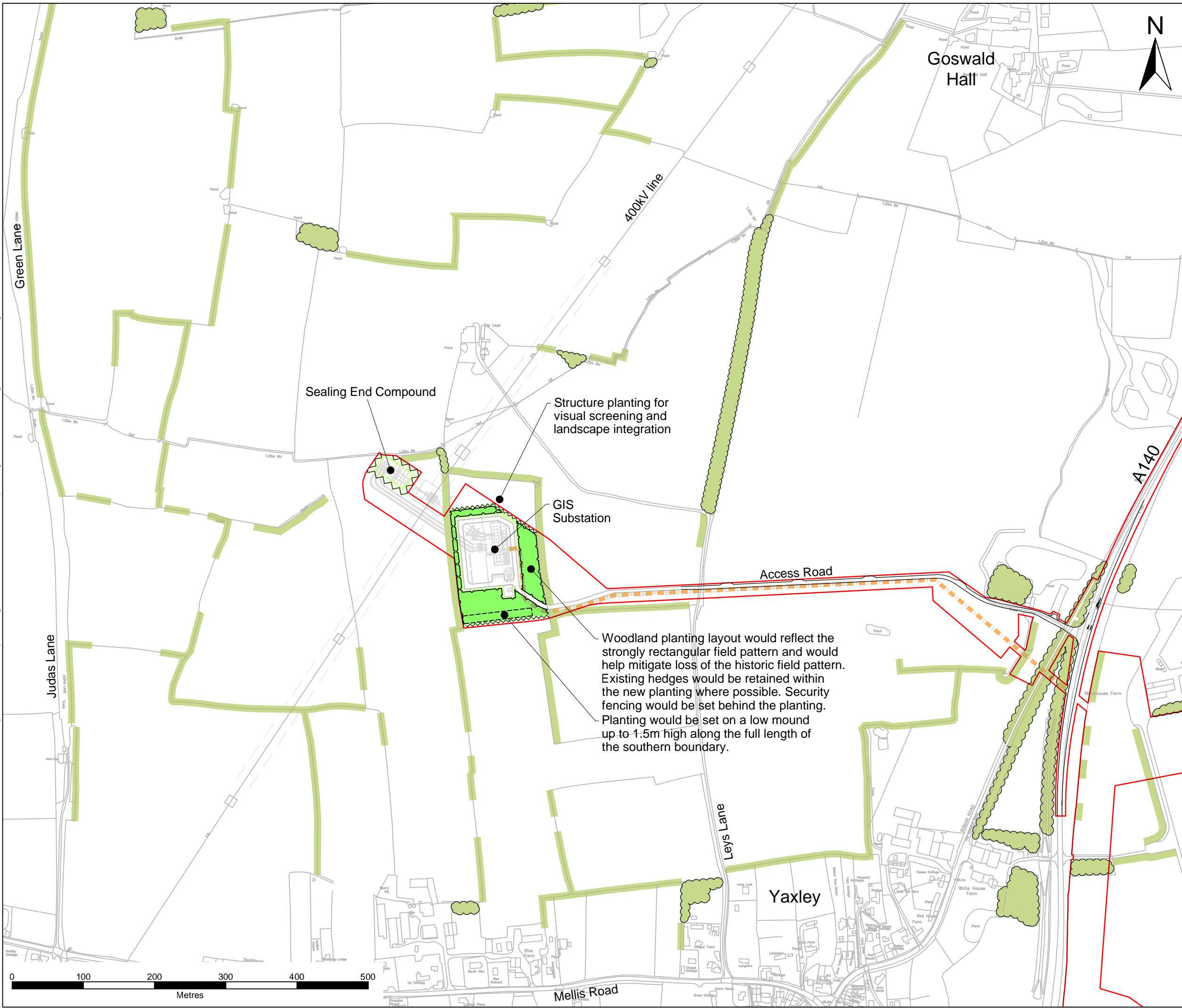
Drawn: BRG	Checked: KL
Designed: KL	Approved:
Date: 05/12/2014	Scale: 1:5,000 A3 Sheet:
Project Number: 3512438B	Drawing Number: Figure 11.35
	Revision: 04

© Copyright Parsons Brinckerhoff

Login: Giles, Ben
 Plot Date: 05/12/2014 14:15:10
 File Name: N:\35124351\2438B PPP Eye Airfield\Landscape\Z Dwg\1-current\Revised Landscape Mitigation Nov. 2014\Figure 11.35_04.dwg



Login: Giles, Ben
 Plot Date: 16/12/2014 17:13:26
 File Name: N:\35124\3512438B PPP Eye Airfield\Landscape\Z Dwg\1-current\Revised Landscape Mitigation Nov. 2014\Figure 11.37_05.dwg



Key

	Project red line boundary
Existing	
	Woodland/plantation
	Hedgerow
Proposed	
	Structure/Screen Woodland
	Hedgerow / shrubs
	Grass
	Landscape mound
	Cable
	Access road
	400kV OHL

- Notes**
- This drawing is to be read in conjunction with the Interim Landscape Mitigation Strategy (as amended).
 - The proposed planting and mounding layout is indicative only and is the minimum that would be provided for landscape mitigation. The detailed proposals will be developed in conjunction with the detailed engineering proposals and in discussion with National Grid, in order to fulfil draft DCO Requirements 4 and 5.
 - Do not scale off this plan. The proposed layout comprises small features which cannot be measured accurately on the 1:5,000 Ordnance Survey map data when printed at A3 size.
 - No construction activities or planting is to be undertaken within 3m of the centreline of existing hedges to be retained.

Rev	Date	Description	By	Chk	App
05	16.12.14	Access road and landscape mitigation revised.	BRG	KL	KL
04	04.12.14	Site layout, red line boundary and landscape mitigation revised.	BRG	KL	KL
03	12.11.14	Boundary revised.	BRG	KL	KL
02	10.11.14	Notes added. Plan note amended to omit early planting.	BRG	KL	KL
01	03.11.14	Landscape mounding 1.5m high shown on southern boundary.	BRG	KL	KL

© Crown Copyright and database right 2013.
Ordnance Survey 0100031673

PARSONS BRINCKERHOFF

Queen Victoria House
Redland Hill, Redland
Bristol BS6 6US

Tel: 44-(0)117-933-9300
Fax: 44-(0)117-933-9253



Site/Project:
Progress Power Project

Title:
**Landscape Mitigation
Electrical Connection
Compound
GIS Technology**

Drawn: BRG	Checked: KL
Designed: KL	Approved: KR
Date: 16/12/2014	Scale: 1:5,000 A3 Sheet:
Project Number: 3512438B	Drawing Number: Figure 11.37
	Revision: 05

© Copyright Parsons Brinckerhoff